

Fulflo® LT Series

Polymeric vessels for water filtration
(non ASME code)

Fulflo® LT Series Polymeric Vessels are an ideal economical choice for low flow industrial and potable water applications. Standard and large diameter vessels accommodate 2½ and 4½ inch O.D. double-open-end Fulflo cartridges and meet FDA requirements for use with potable fluids. Both 10-in. and 20-in. vessels, with or without pressure relief vent, are available. Installation wrenches and brackets are optional.

Benefits

- Fulflo® polymeric vessels are available in two diameters and lengths, with or without relief vent
- The all-polymeric, corrosion-resistant LT series vessels are economical alternatives to stainless steel vessels when high temperature and high pressure are not specified
- All models are made of materials that meet FDA requirements

Contact Information

Parker Hannifin Corporation
domnick hunter
Process Filtration - North America
2340 Eastman Avenue
Oxnard, California, USA 93030

toll free +1 877 784 2234
phone +1 805 604 3400
fax +1 805 604 3401
dhpsales.na@parker.com

www.parker.com/processfiltration



- The LTG models provide both 1 in. and 1½ in. NPT connection in same head
- Positive head-to-shell “stop” prevents over tightening
- Unique o-ring design ensures effective sealing by positive tangential contact and eliminates accidental misplacement
- LT model is ideal for Fulflo® bonded, pleated and wound cartridges, as well as activated carbon core models MMCT-10, MC10-2, MC20-2 and MC30-2
- LTG model is ideal for Fulflo® TruBind® 400 series cartridges and 4½ in. O.D. wound cartridges in double-open-end style
- Optional installation wrenches accommodate faster cartridge change-out

- Mounting brackets are available for pipe and wall installation
- LT models are tested to industry standards of Water Quality Association for burst pressure, seal integrity, and fatigue resistance

Applications

- Potable Water
- Post Oil/Water Separator Polishing
- Leisure/Commercial Shipping Bilge Water
- DI Water
- Process Water
- Industrial Discharge
- Compressor Condensate
- Alkaline Parts Washing

ENGINEERING YOUR SUCCESS.

Fulflo® LT Series

SPECIFICATIONS

Materials of Construction

White talc-reinforced polypropylene head with clear Styrene-Acrylonitrile (SAN) shell.

Head-to-shell O-ring

LT model: 2-240 Buna-N

LTG model: 2-358 Buna-N

Recommended Operating Conditions

Maximum operating temperature:

125°F (52°C) @ 100psi (6.9bar)

Maximum operating pressure:

LT: 150psi (10.3bar) @ 75°F (22°C)

LTG: 125psi (8.6bar) @ 75°F (22°C)

Maximum Recommended Flow Rate

LT10: 6gpm (23 lpm)

LT20: 12gpm (45 lpm)

LTG10: 10gpm (38 lpm)

LTG20: 20gpm (76 lpm)

Connection Dimensions

LT: ¾ in. FNPT

LTG: 1 and 1½ in. FNPT

(dual connection)

Accepts Industry Standard Cartridge Sizes (Nominal)

Lengths:

9-¹³/₁₆ in. (249 mm);

20 in. (508 mm)

I.D.: 1¹/₁₆ in. (27mm)

O.D.:

LT 2-½ in. (64 mm);

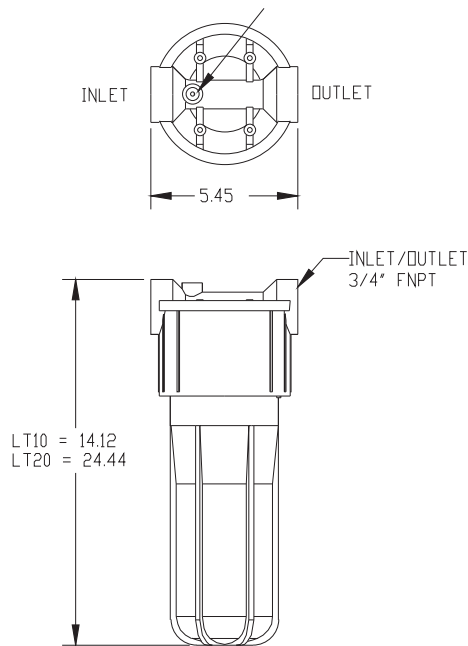
LTG 4-½ in. (114mm)

Optional Seal Configuration:

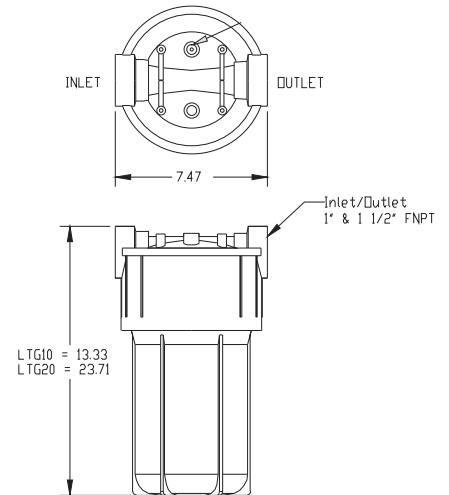
LT: Accommodates 213 o-ring seal

("PR" cartridge code)

Dimensions: LT Model



Dimensions: LTG Model



Available Options for LT Model

Option	Part #
Wrench for 10" Shell	6880-1-005
Wrench for 20" Shell	6880-1-010
L-Bracket -Wall Mount	0820-6010
U-Bracket-Pipe Mount	0820-6015

Available Options for LTG Model

Option	Part #
Wrench for 10" Shell	6880-6000
Wrench for 20" Shell	6880-6001

Ordering Information

Vessel Series		Vessel Length		Vent	
LT	For nominal 2 ½" O.D. cartridges	CODE	Inches	Blank	No Vent (LT only)
		10	10	V	Vent
LTG	For nominal 4 ½" O.D. cartridges	20	20		

Specifications are subject to change without notification.
For User Responsibility Statement, see www.parker.com/safety



© 2010 Parker-Hannifin Corporation
domnick hunter Process Filtration - North America
All Rights Reserved
Fulflo is a registered trademark of Parker-Hannifin Corporation

DS_IP_LT Vessel Rev. A