



## ARTICULO: V104

### Válvula de Compuerta con extremos bridados ANSI 150

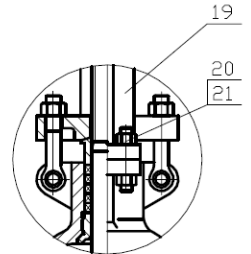
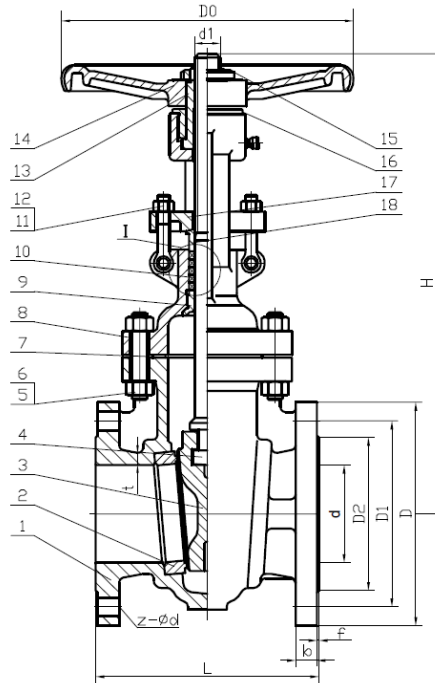
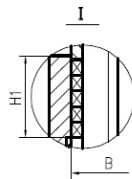
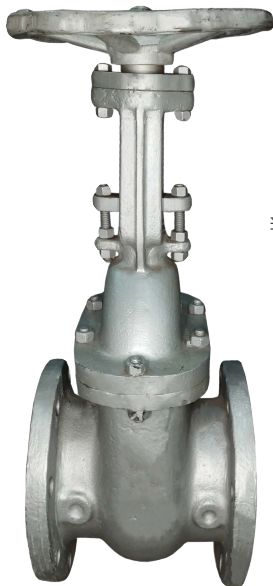
### Flanged ends Gate Valve Class 150

#### Características

1. Válvula de compuerta Clase 150.
2. Diseño según API 600.
3. Construcción en Acero al carbono ASTM A216 WCB.
4. Compuerta ASTM A216 WCB + 13 Cr.
5. Asiento ASTM A105 + 13 Cr.
6. Trim # 1.
7. Distancia entre bridas según ASME B 16.10.
8. Extremos bridados según ASME B 16.5.
9. Empaquetadura en Grafito.
10. Presión máxima de trabajo 19,6 bar (285 psi) a 38°C / 5,5 bar (80 psi) a 425°C.

#### Features

1. Gate valve 150 Class.
2. Design according to API 600.
3. Made by Carbon Steel ASTM A216 WCB.
4. Wedge Disc ASTM A216 + 13 Cr.
5. Seat ASTM A105 + 13 Cr.
6. Trim #1.
7. Face to Face according to ASME B 16.10.
8. Flanged ends according to ASME B 16.5.
9. Packing Graphite.
10. Max. Working pressure 19,6 bar (285 psi) a 38°C / 5,5 bar (80 psi) a 425°C.



Yoke  $\geq 10''$



| Nº | Denominación / Name                       | Material                     | Acabado Superficial / Surface Treatment |
|----|---|------------------------------|---|
| 1  | Cuerpo / Body                             | ASTM A216 WCB                | Pintado / Painted                       |
| 2  | Asiento / Seat                            | ASTM A105 + 13 Cr            | -----                                   |
| 3  | Compuerta / Wedge Disc                    | ASTM A216 WCB + 13 Cr        | -----                                   |
| 4  | Eje / Stem                                | ASTM A276 - 410              | -----                                   |
| 5  | Tornillo tapa / Bonnet Bolt               | ASTM A193 Gr. B7             | -----                                   |
| 6  | Tuerca tapa / Bonnet Nut                  | ASTM A194 Gr. 2H             | -----                                   |
| 7  | Junta Cuerpo / Body Gasket                | S.S 304 + Graphite           | -----                                   |
| 8  | Tapa / Bonnet                             | ASTM A216 WCB                | Pintado / Painted                       |
| 9  | Buje asiento superior / Back Seat Bushing | ASTM A276 - 410              | -----                                   |
| 10 | Estopada / Stem packing                   | Grafito / Graphite           | -----                                   |
| 11 | Tornillo / Bolt                           | ASTM A193 Gr. B7             | -----                                   |
| 12 | Tuerca / Nut                              | ASTM A194 Gr. 2H             | -----                                   |
| 13 | Tuerca Eje / Stem Nut                     | ASTM A536 80-55-06           | -----                                   |
| 14 | Volante / Handwheel                       | Fundición / Cast Iron        | Pintado / Painted                       |
| 15 | Tuerca Volante / Handwheel Nut            | Acero carbono / Carbon steel | -----                                   |
| 16 | Tuerca Prensa / Gland Nut                 | Acero carbono / Carbon steel | -----                                   |
| 17 | Brida Prensa / Gland Flange               | ASTM A105                    | -----                                   |
| 18 | Prensa / Gland                            | ASTM A276 - 410              | -----                                   |
| 19 | Yoke / Yoke                               | ASTM A216 WCB                | Pintado / Painted                       |
| 20 | Tornillo Yoke / Yoke Bolt                 | ASTM A193 Gr. B7             | -----                                   |
| 21 | Tuerca yoke / Yoke Nut                    | ASTM A194 Gr. 2H             | -----                                   |

#### DIMENSIONES GENERALES / GENERAL DIMENSIONS

| Ref.      | Medida / Size | Dimensiones / Dimensions (mm) |     |     |       |       |      |   |         |    |         |    |    |
|-----------|---------------|-------------------------------|-----|-----|-------|-------|------|---|---------|----|---------|----|----|
|           |               | d                             | L   | D   | D1    | D2    | b    | f | z-Ød    | d1 | t (min) | B  | H1 |
| V104-0050 | 2"            | 51                            | 178 | 150 | 120.7 | 92.1  | 14.3 | 2 | 4-19    | 20 | 8.6     | 32 | 38 |
| V104-0063 | 2 ½"          | 64                            | 190 | 180 | 139.7 | 105   | 15.9 | 2 | 4-19    | 20 | 9.7     | 32 | 38 |
| V104-0075 | 3"            | 76                            | 203 | 190 | 152.4 | 127   | 17.5 | 2 | 4-19    | 24 | 10.4    | 36 | 43 |
| V104-0100 | 4"            | 102                           | 229 | 230 | 190.5 | 157.2 | 22.3 | 2 | 8-19    | 26 | 11.2    | 38 | 41 |
| V104-0125 | 5"            | 125                           | 254 | 255 | 215.9 | 185.7 | 22.3 | 2 | 8-22.5  | 26 | 11.6    | 38 | 41 |
| V104-0150 | 6"            | 152                           | 267 | 280 | 241.3 | 215.9 | 23.9 | 2 | 8-22.5  | 30 | 11.9    | 46 | 52 |
| V104-0200 | 8"            | 203                           | 292 | 345 | 298.5 | 269.9 | 27   | 2 | 8-22.5  | 32 | 12.7    | 48 | 52 |
| V104-0250 | 10"           | 254                           | 330 | 405 | 362   | 323.8 | 28.6 | 2 | 12-25.5 | 36 | 14.2    | 52 | 53 |
| V104-0300 | 12"           | 305                           | 356 | 485 | 431.8 | 381   | 30.2 | 2 | 12-25.5 | 38 | 16      | 58 | 62 |
| V104-0350 | 14"           | 350                           | 381 | 535 | 476.3 | 412.8 | 33.4 | 2 | 12-28.5 | 41 | 16.8    | 62 | 70 |
| V104-0400 | 16"           | 400                           | 406 | 595 | 539.8 | 469.9 | 35   | 2 | 16-28.5 | 44 | 17.5    | 64 | 70 |
| V104-0450 | 18"           | 450                           | 432 | 635 | 577.9 | 533.4 | 38.1 | 2 | 16-32   | 48 | 18.3    | 68 | 90 |



| Ref.      | Medida / Size | Dimensiones / Dimensions (mm) |          | Peso / Weight (Kg) |
|-----------|---------------|-------------------------------|----------|--------------------|
|           |               | D0                            | H (open) |                    |
| V104-0050 | 2"            | 200                           | 405      | 18                 |
| V104-0063 | 2 1/2"        | 200                           | 455      | 24                 |
| V104-0075 | 3"            | 250                           | 505      | 30                 |
| V104-0100 | 4"            | 250                           | 585      | 47                 |
| V104-0125 | 5"            | 300                           | 680      | 62                 |
| V104-0150 | 6"            | 300                           | 785      | 73                 |
| V104-0200 | 8"            | 350                           | 955      | 112                |
| V104-0250 | 10"           | 400                           | 1175     | 178                |
| V104-0300 | 12"           | 450                           | 1365     | 256                |
| V104-0350 | 14"           | 500                           | 1515     | 392                |
| V104-0400 | 16"           | 600                           | 1725     | 430                |
| V104-0450 | 18"           | 650                           | 1890     | 540                |

**CURVA PRESION TEMPERATURA / PRESSURE TEMPERATURE RATING**

